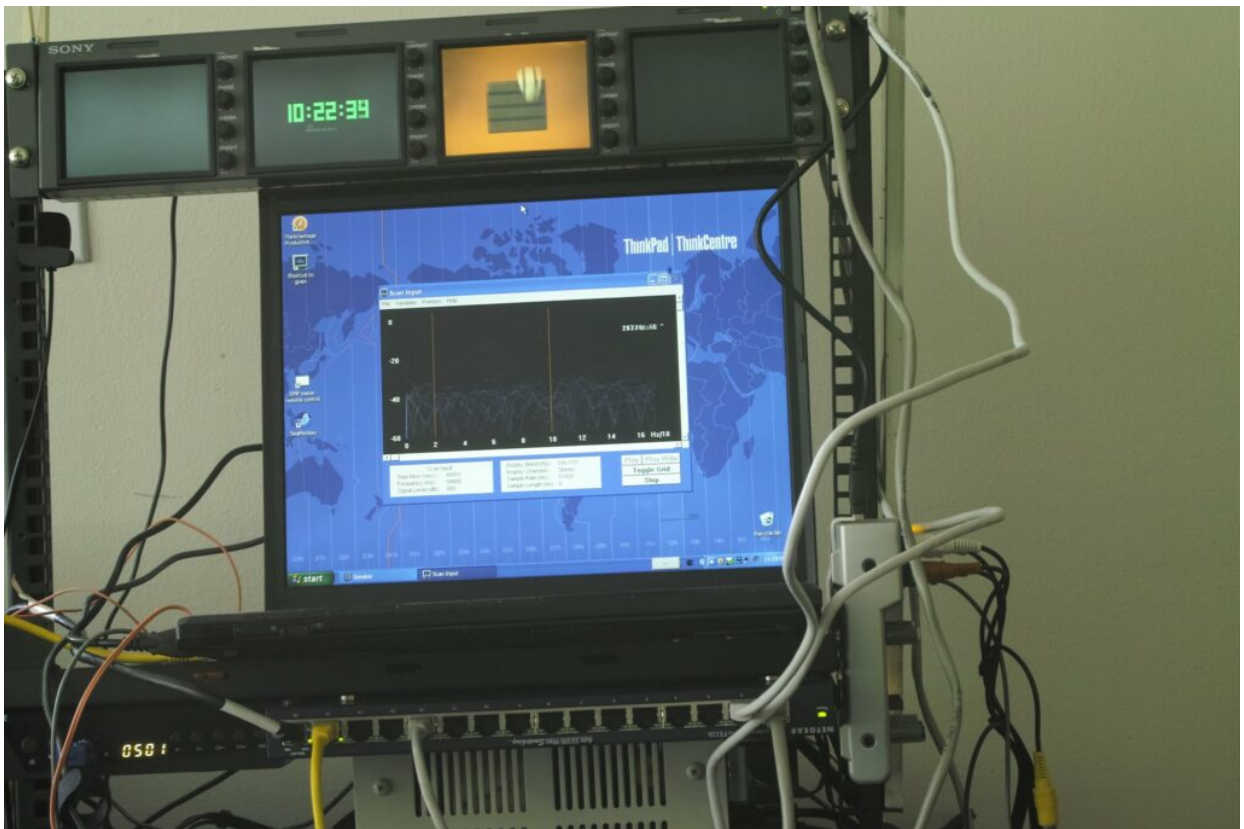


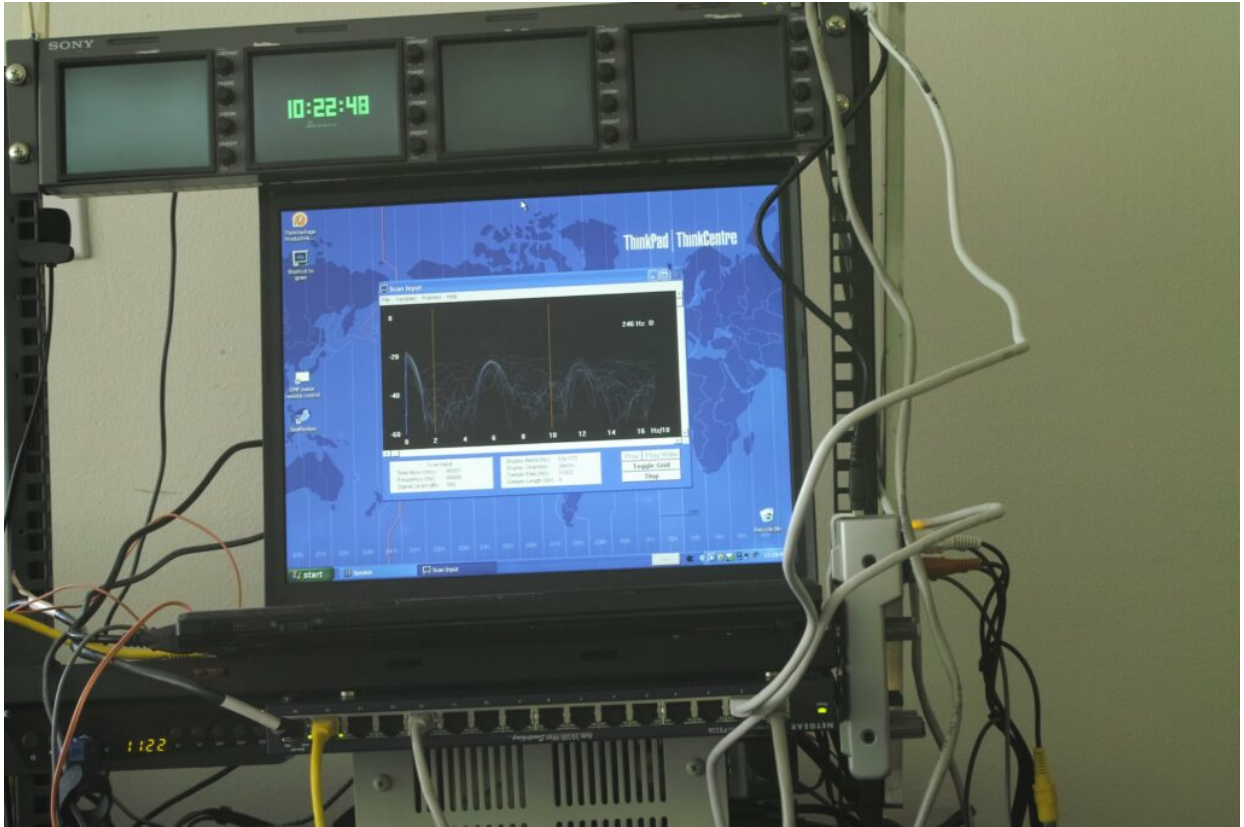
# dB vs Hz charts at 1sec shutter speed, analogue input equipment test...

With the dB (from 0 to -60dB) vs Hz (from 0 to 160hz) charts from analogue initial observations of equipment testing:

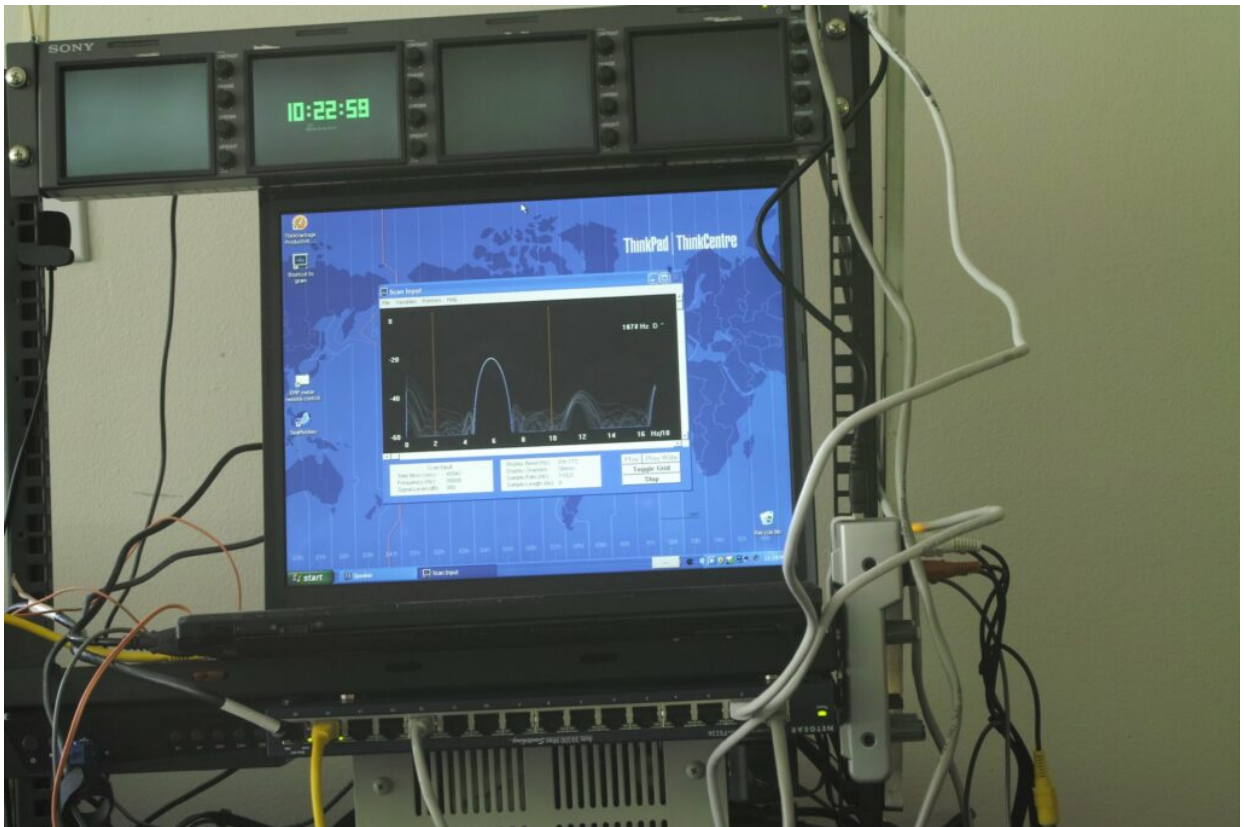
1. Equipment testing of analogue scope of states: ATSC on, ATSC off, ATSC off and power unplugged and ATSC off power unplugged and audio cord unplugged.



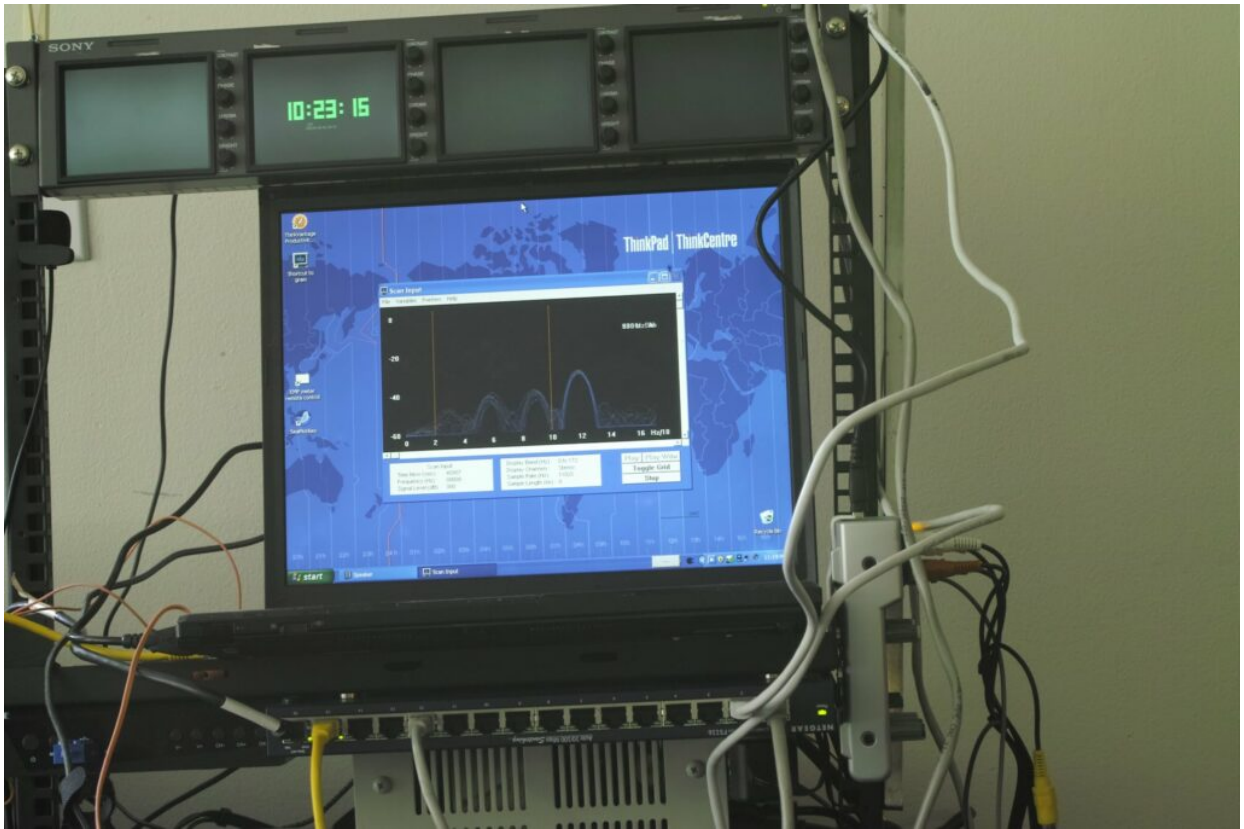
ATSC On



ATSC Off



ATSC off and power unplugged



ATSC off, power unplugged and audio cable removed from input

The laptop was determined to be the cause of the noisy signal. I swapped a laptop to one that had grounding and since then have been observing a clean signal.